



3D Disto Software
for Windows®



Leica 3D Disto Tutorial



CAD tools

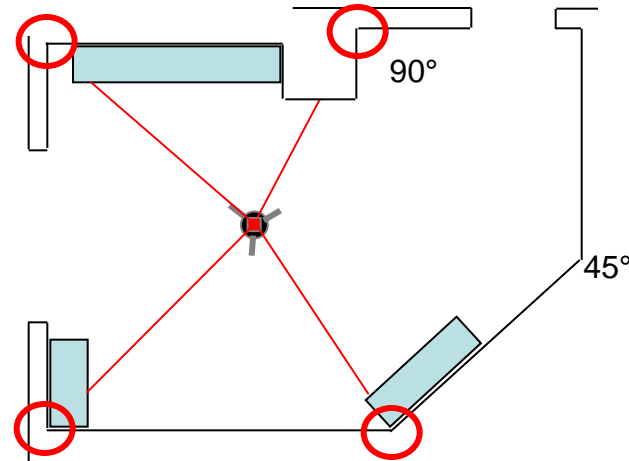
- when it has to be **right**

Leica
Geosystems

CAD Tools

When to use them

- to measure windows, doors and other wall details
- to measure hidden points
- to create corners of exactly 90°
- to create preset dimensions
- to complete missing points and edges
- to measure rooms with minimal effort

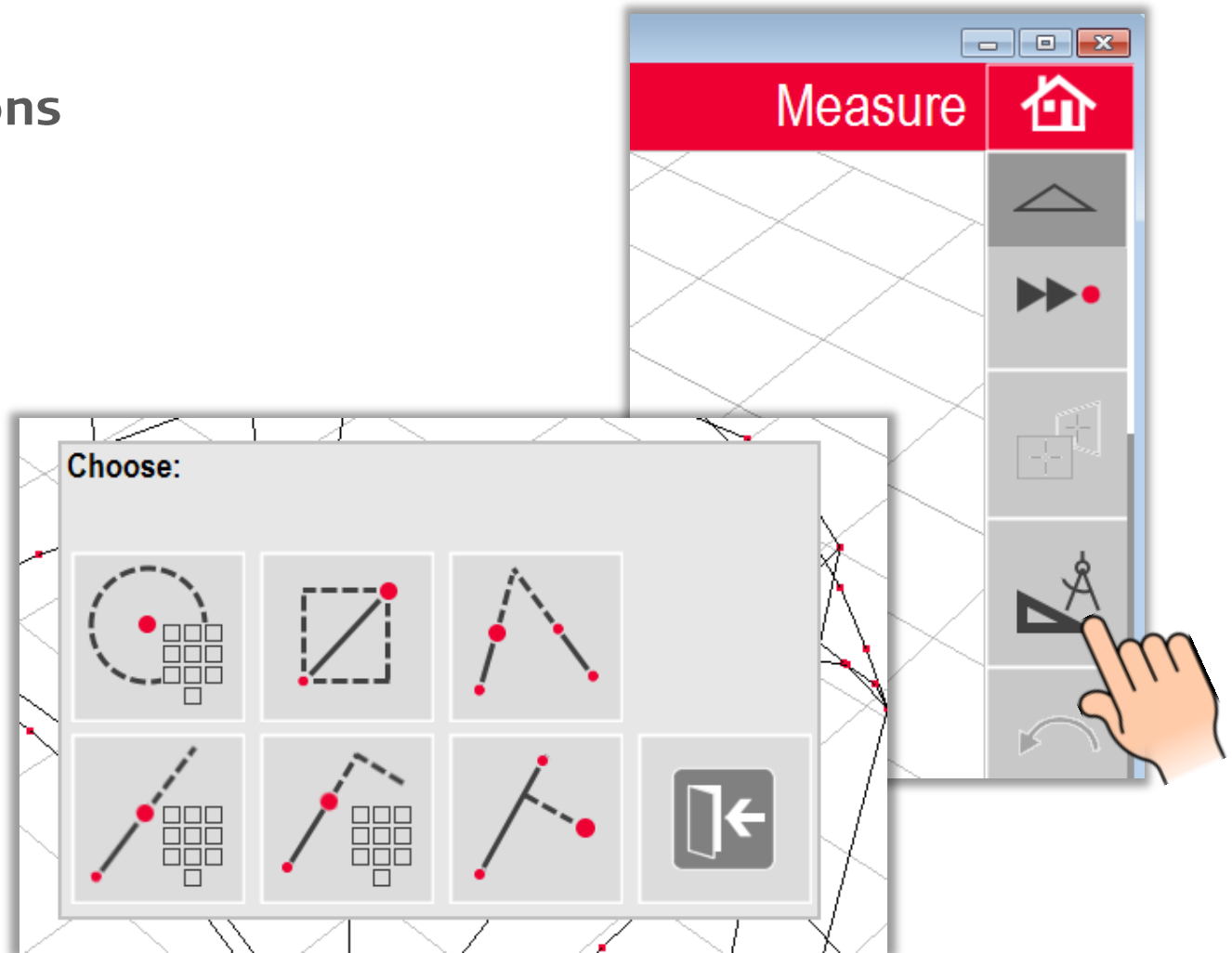


- when it has to be **right**

CAD Tools

Start & Options

- CAD tools are only offered in the MEASURE application
- click on the CAD tool key in the tool bar
- select a tool from the list

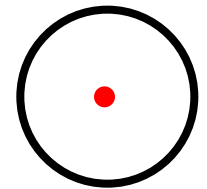
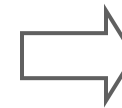
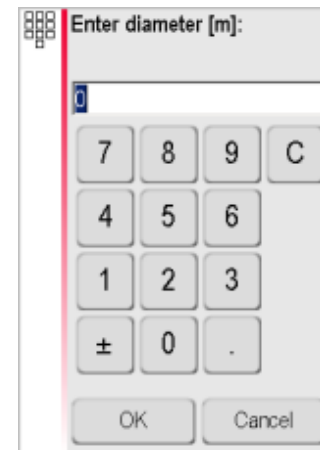
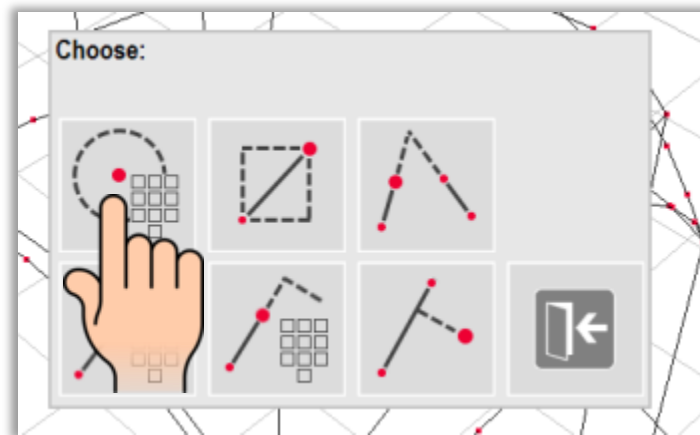


- when it has to be **right**

CAD Tools

Circle Tool

Draws a circle around the selected point, e. g. to measure plugs, sinks, etc.:



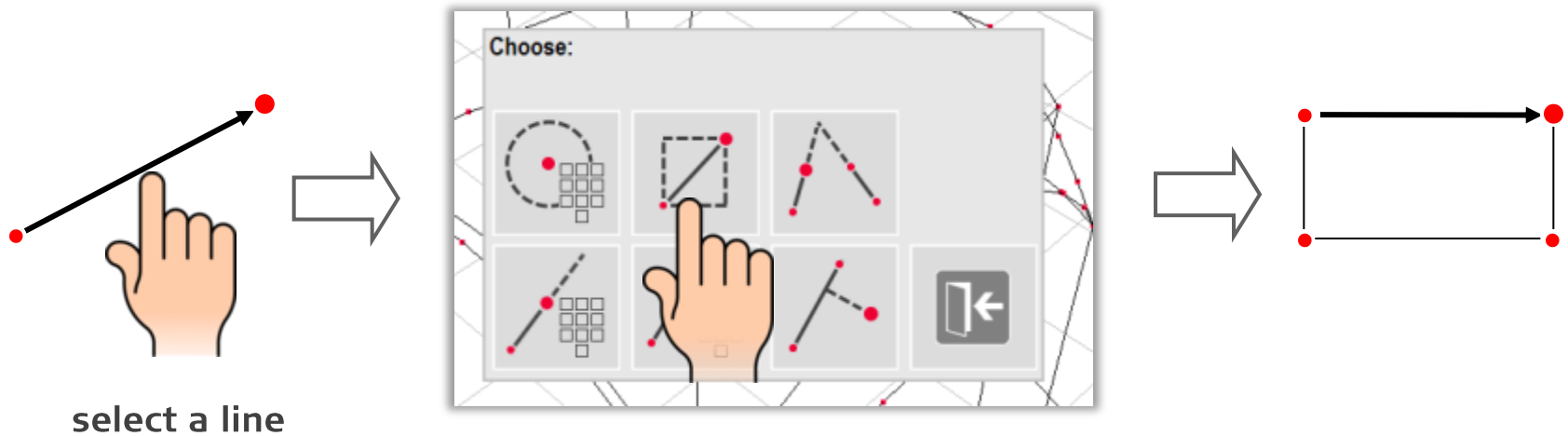
enter the diameter

- when it has to be **right**

CAD Tools

Rectangle Tool

Transforms a diagonal line into a rectangle, e. g. to measure windows or doors:



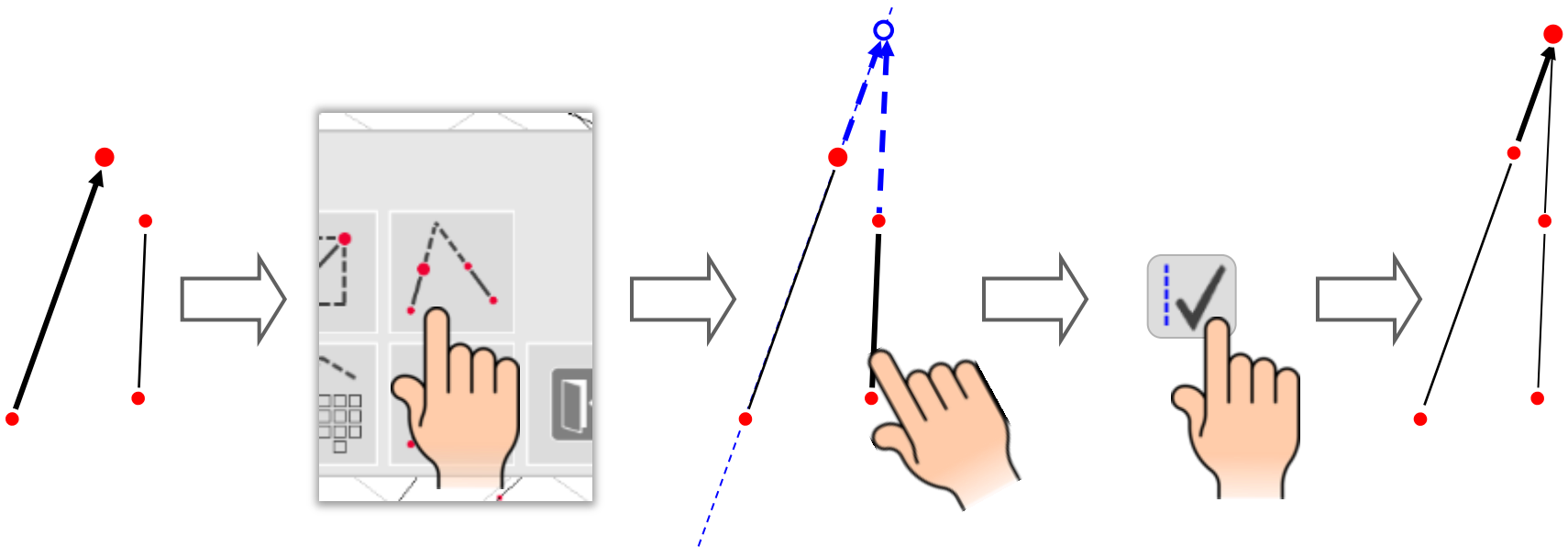
For vertical surfaces only!

- when it has to be **right**

CAD Tools

Line intersection

Intersects two lines:



select a line

tip on 2nd line
→ preview
appears

accept

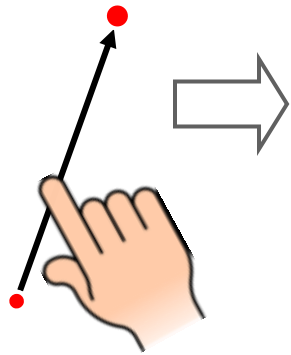
Result

- when it has to be **right**

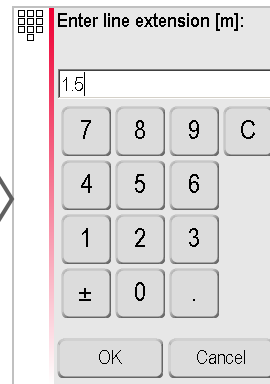
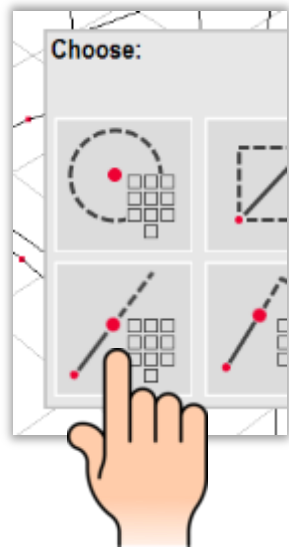
CAD Tools

Line extension

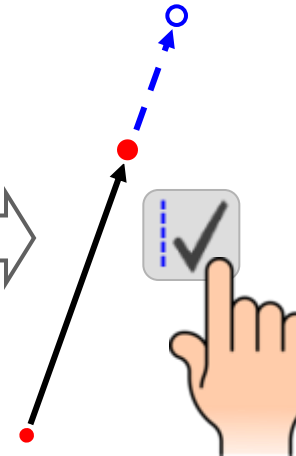
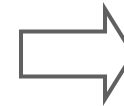
Prolongs a measured line:



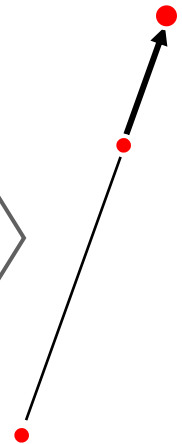
select a line



Enter a value



Accept



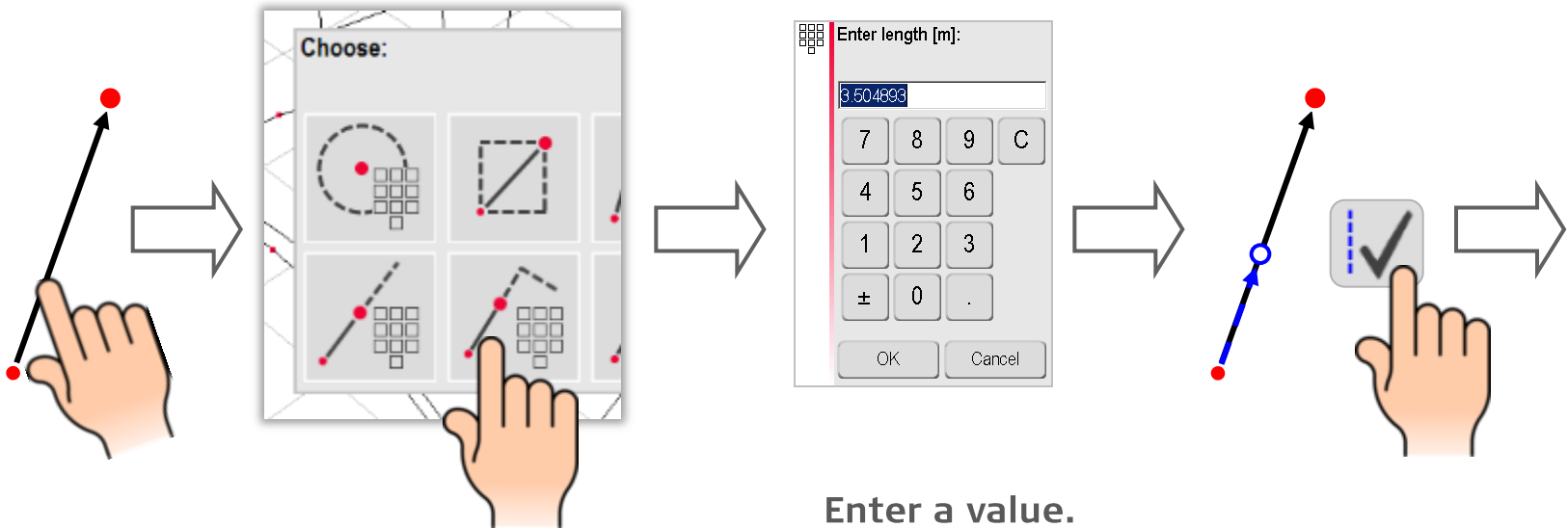
Result

- when it has to be **right**

CAD Tools

Point shift (1)

Creates a point related to a line:



select a
line

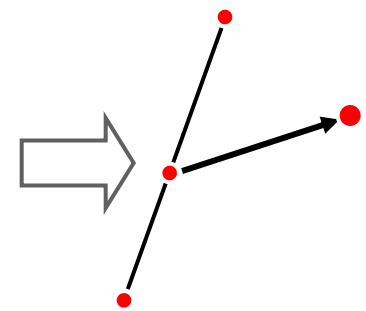
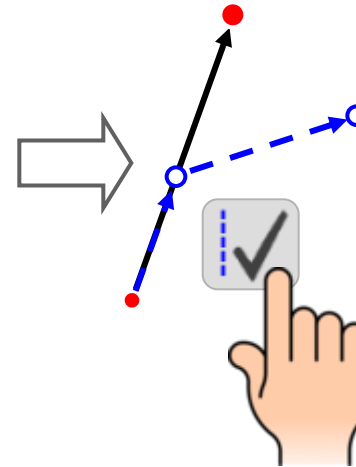
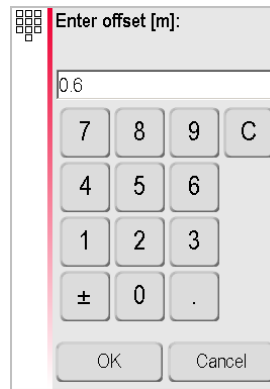
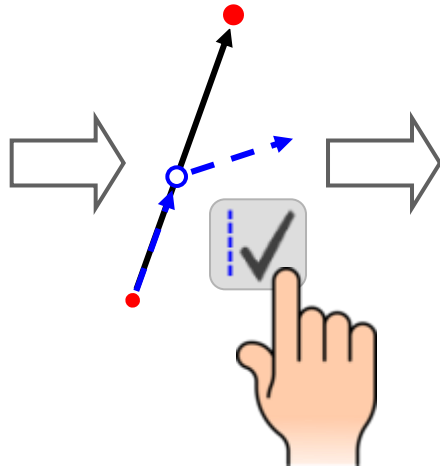
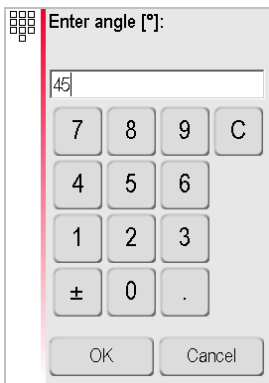
Enter a value.
Default = length
of the selected
line.
Negative entries
are accepted.

Accept

- when it has to be **right**

CAD Tools

Point shift (2)



Enter an angle

Accept

Enter an offset

Accept

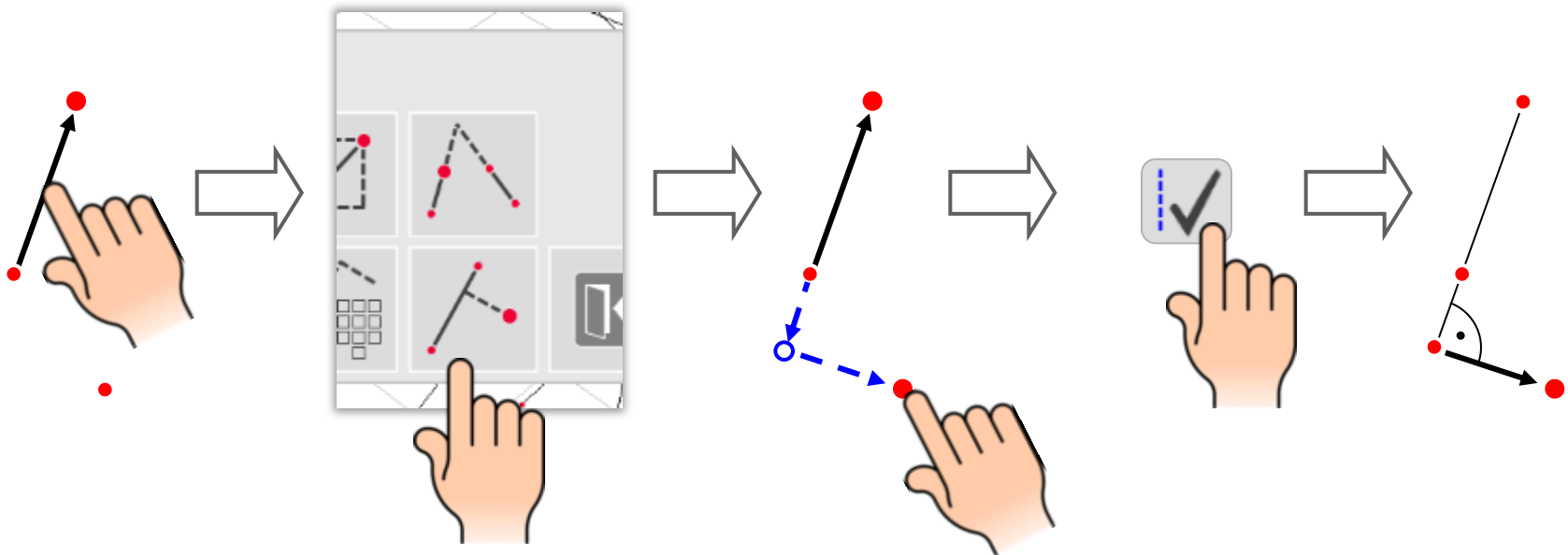
Result

- when it has to be **right**

CAD Tools

Perpendicular intersection

Projects a point perpendicular to a line and creates a right angle:



select a
line

Select a point
→ preview
appears

Accept

Result

- when it has to be **right**

CAD Tools

Examples

The following pages show some examples how to use the CAD tools effectively.



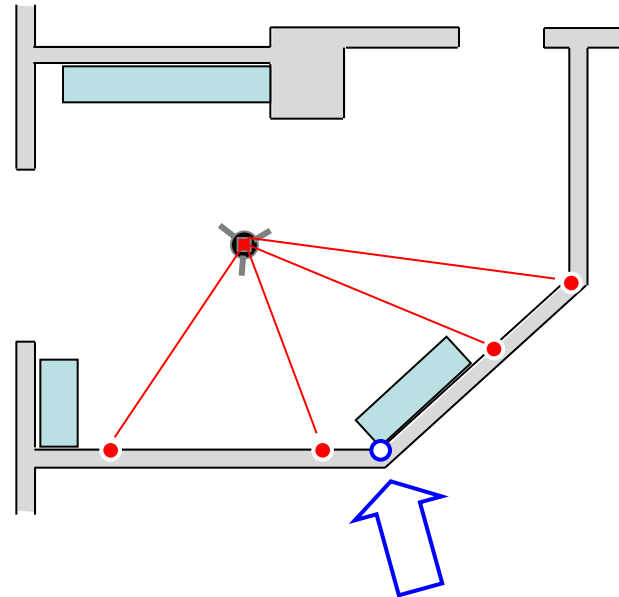
- when it has to be **right**

Leica
Geosystems

CAD Tools

Hidden Corner with Line Intersection

- measure 4 points on two walls
- use „Line intersection“ tool to determine hidden corner

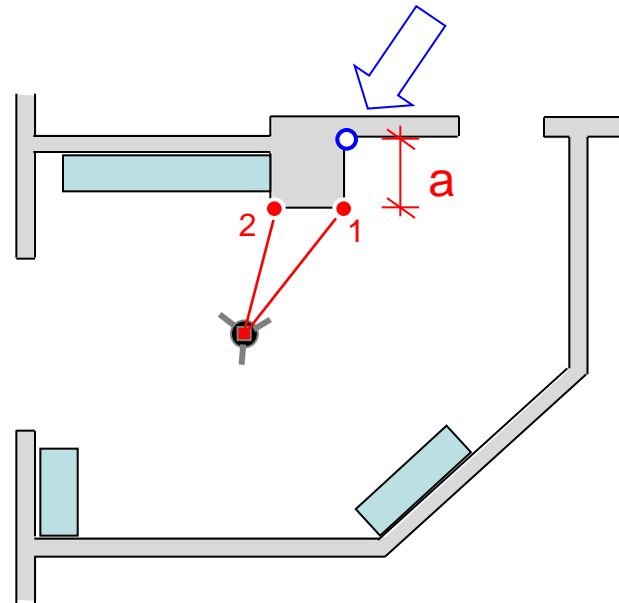


- when it has to be **right**

CAD Tools

Measuring around the corner with "Point shift"

- measure 2 corners with 3D Disto
- measure „a“ by hand
- start POINT SHIFT tool
- enter 0, 90° and „a“ to create the hidden point

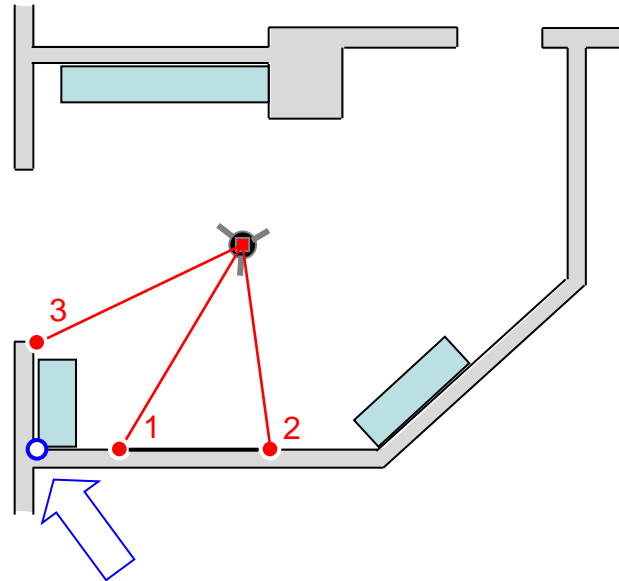


- when it has to be **right**

CAD Tools

Creating a 90° corner with “Perpendicular intersection”

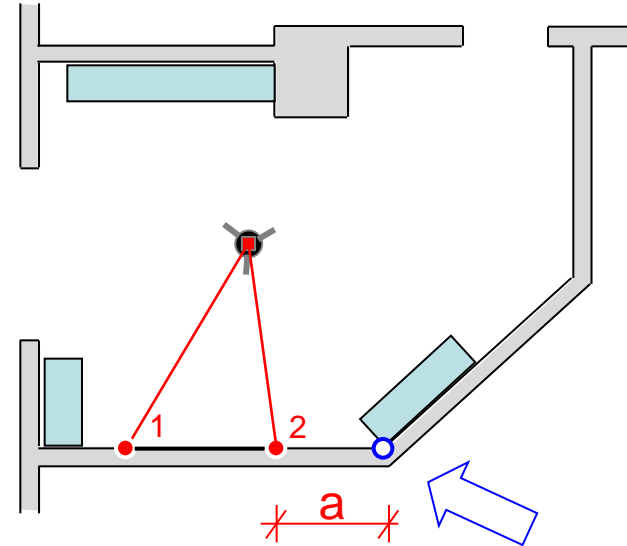
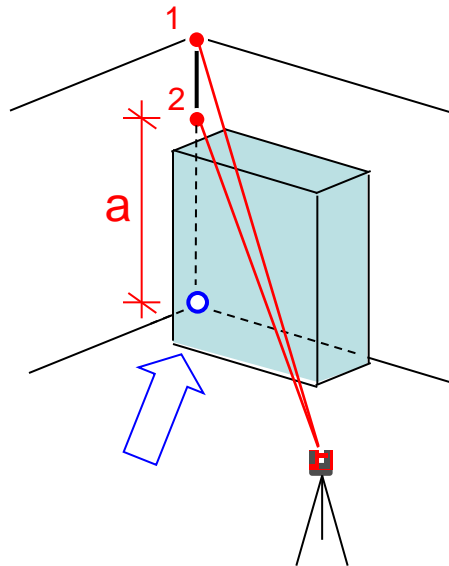
- measure P1 and P2 on the wall
- measure P3 on the corner
- start PERPENDICULAR INTERSECTION tool with line P1/P2
- tip on P3 and accept



- when it has to be **right**

CAD Tools

Measure a hidden corner with "Line extension"



- measure P1 and P2 with 3D Disto
- measure „a“ by hand
- start LINE EXTENSION tool on line P1/P2
- enter „a“ and accept

- when it has to be **right**

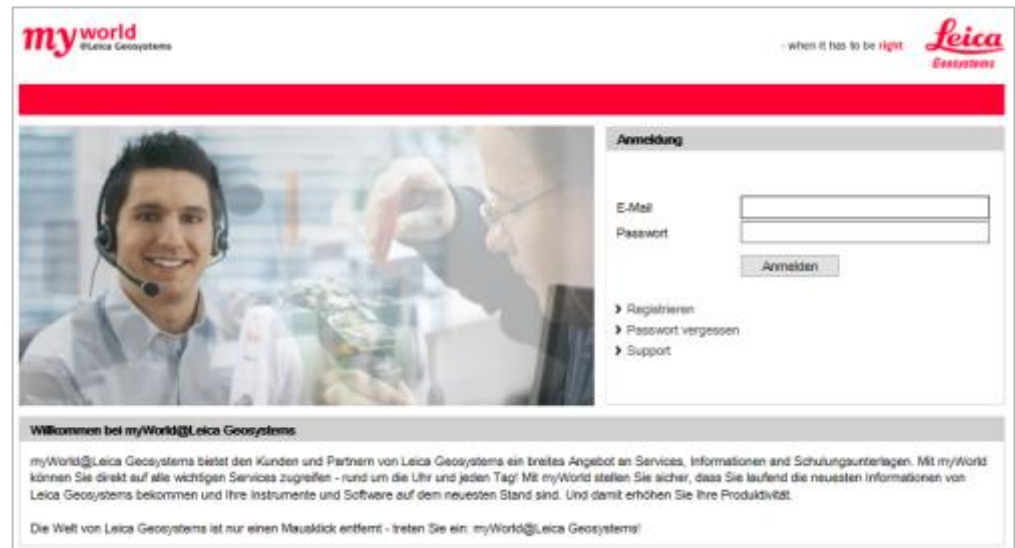
Leica 3D Disto

Registration at myWorld



Register your 3D Disto on myWorld for:

- warranty extension
- license keys
- more tutorials
- free software updates
- support
- manuals



www.disto.com